

CASE STUDY: INVESTIGATIONS

SHUTTING OUT FRAUD - AND SHUTTING OUT CRIMINALS

The Challenge

A global leader in payment processing technology works to ensure that payments are consistently secure, no matter where its clients and consumers do business. But like other companies that trade in multiple countries, it's a reality that each has its own customs and issues, and there's no one-size-fits all solution for commerce. For the company concerned, this was made clear in Paraguay.

The company's fraud alert system consisted of basic credit-fraud tripwires meant to flag accounts that appeared deceptive or exhibited scam-prone behavior. While this served them well in much of the world, suspicious activity pinpointed to Asuncion, Paraguay, was signaling such major credit card fraud that the company could be looking at huge write-downs – and ultimately, significant financial loss.

They turned to Anvil with the request for a thorough fraud investigation, including:

- background checks
- property verifications
- lifestyle/financial means verifications
- “link analysis” to determine whether suspected perpetrators were working together as part of a crime ring, or coincidentally as individuals

The Solution

Most importantly, to prevent further damage, the company needed the answers fast and Anvil delivered.

Just five days after mobilizing a team of local investigators and lawyers, Anvil took their findings and provided the company with more than 30 investigative reports on each of the suspected accounts – and a comprehensive link analysis document that showed the relationships of the suspected perpetrators.

The Result

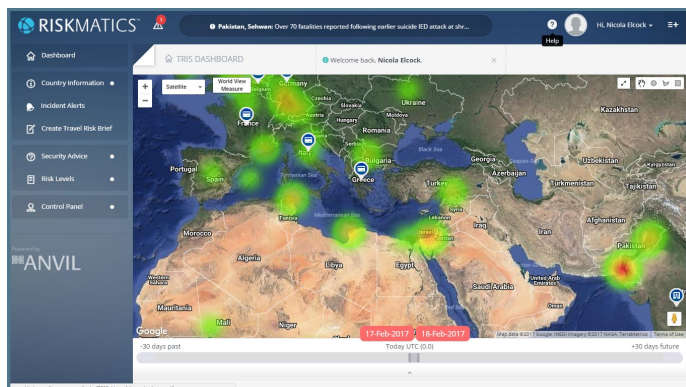
These results exposed that there was a coordinated crime-ring group conducting credit fraud within Paraguay, and in fact led to the successful prosecution of a number of those involved.

Anvil's highly available, thorough, sophisticated, and responsive investigation services helped the company meet its aggressive timeline for critical decision-making to avoid an irrevocable financial impact and continue operation in Paraguay without disruption. This level of service keeps high-value corporations functioning in some of the most unstable areas of the world.

About Anvil

To operate effectively, every business needs to focus on being more adaptable, more flexible, more resilient. It's not enough to look at any single aspect in isolation. You need to consider how every part of the organisation can perform no matter what.

This may mean ensuring your international travellers and expats can work safely and effectively wherever they are in the world.



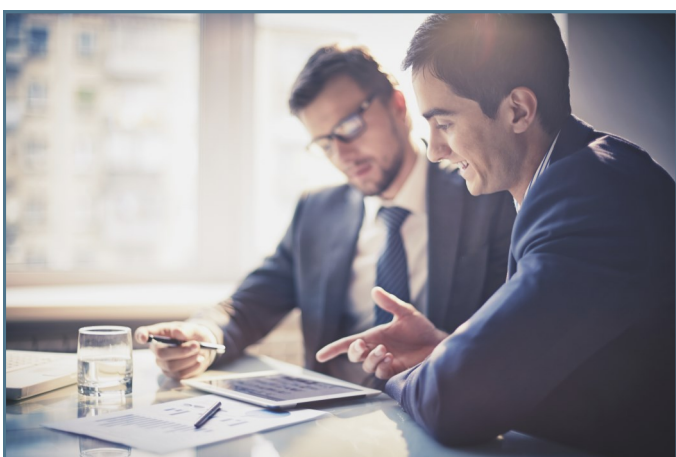
Anvil's Riskmatics™ Heat Map

It may involve making sure your facilities are adequately protected against environmental and man-made risks. Or it could mean focusing on increasing the robustness of your entire end-to-end supply chain.

We can help. Anvil delivers advanced business resilience solutions that protect what matters most to you. Using our award-winning technology platforms, we enable you to accurately assess both pre-existing and dynamically changing risks, wherever they are on the planet.

Our highly experienced analysts are available 24/7 to advise you on the best action to take to keep your people and operations safe. And we provide on-the-ground support to protect your employees, property and business operations. Simply, Anvil puts you in control.

From people on the move and products in transit through to investing in new facilities and entering new markets, with Anvil, you're ready for anything.



Anvil. Protect what matters most.